

B.E. II Semester Examination

BE - II/6(A)

214205

Machine Drawing

Course No. : M - 206

Time Allowed : 3 Hours

Maximum Marks - 100

- Note :**
- i) Attempt Four questions in all. Q.No. 6 is Compulsory
 - ii) Missing dimension, if any, must be assumed suitably.
 - iii) Indicate proportionate dimensions in sketched drawing.
 - iv) Use suitable scale unless otherwise indicated
 - v) The credit will be given to neat and clean drawing.

Section - A

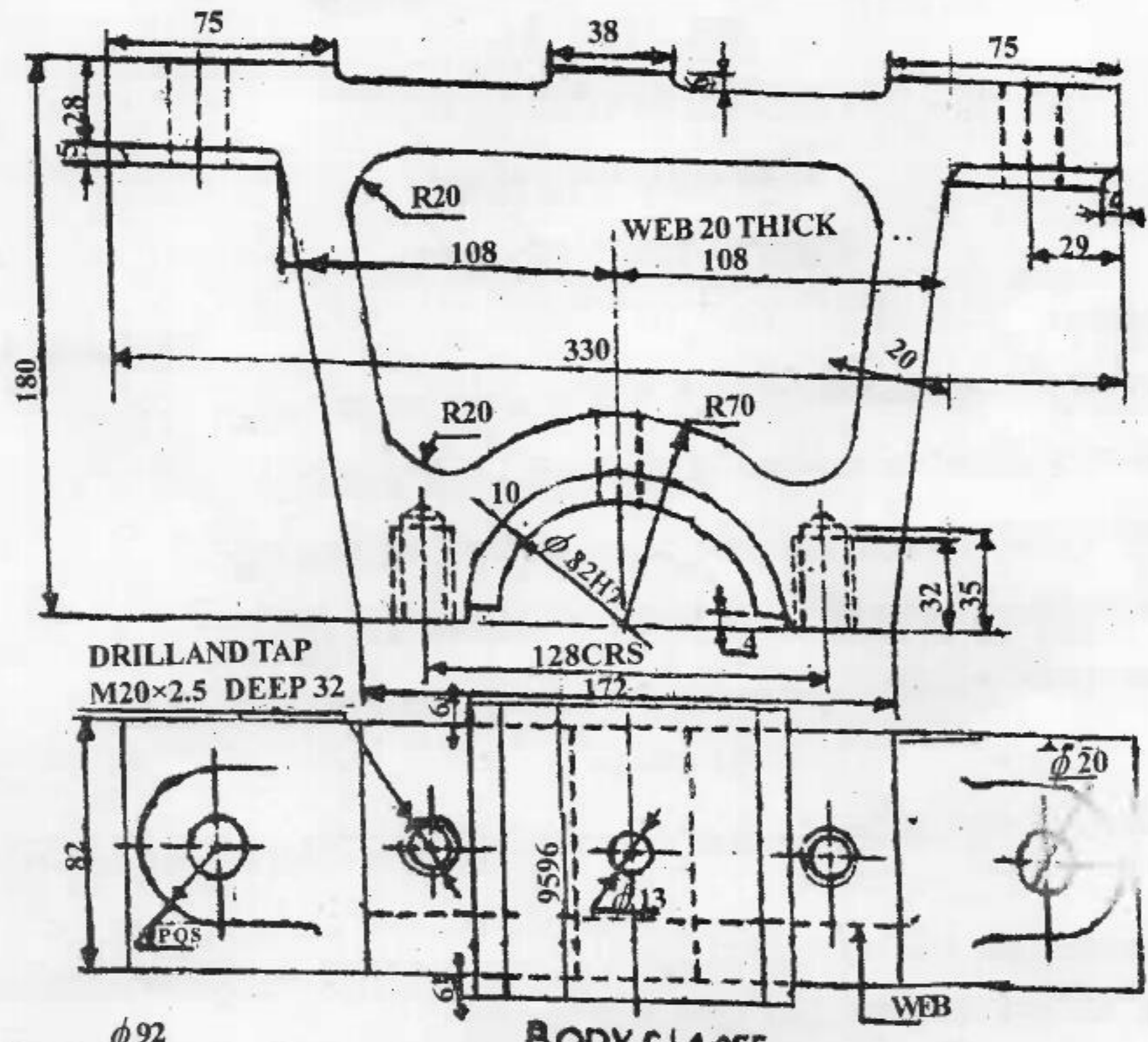
1. a) Sketch pictorial view of any three type of Rivet Heads. Take diameter of rivet = 30mm. (6)
b) Draw front and top view of Double Riveted Butt joint for joining two plates of thickness 9mm. Use two cover straps and snap head rivet. (9)
2. Draw front view and top view of hexagonal double chamfered nut, hexagonal double chamfered bolt, locknut and washer assembly. Taking diameter $d = 25\text{mm}$. (15)
3. Sketch spigot and cotter joint with following views:
 - i) Front view (8)
 - ii) Top view (4)
 - iii) Side view (3)
4. Draw front view and side view of coupling which is used to join two shafts whose axes are parallel and offset to each other. Take dia. of shaft = 30mm. (15)
5. Draw two views of flat belt pulley giving its main dimensions. Take diameter of shaft = 25mm

Section - B

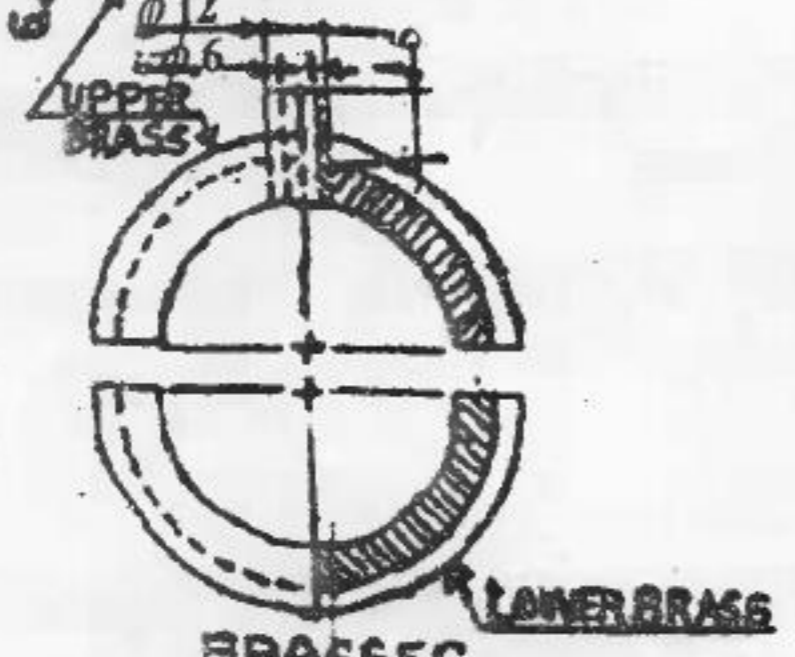
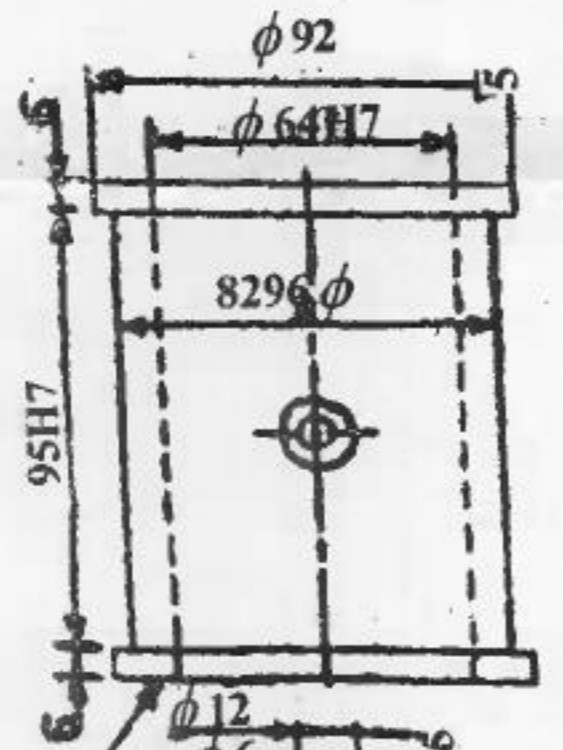
6. Details of pedestal bearing are given in fig. Assemble the parts and draw the following views.
 - i) Front view - Left Half in section and Material panel (30)
 - ii) Side view-Right half in section. (15)
 - iii) Top view. (10)

(2)

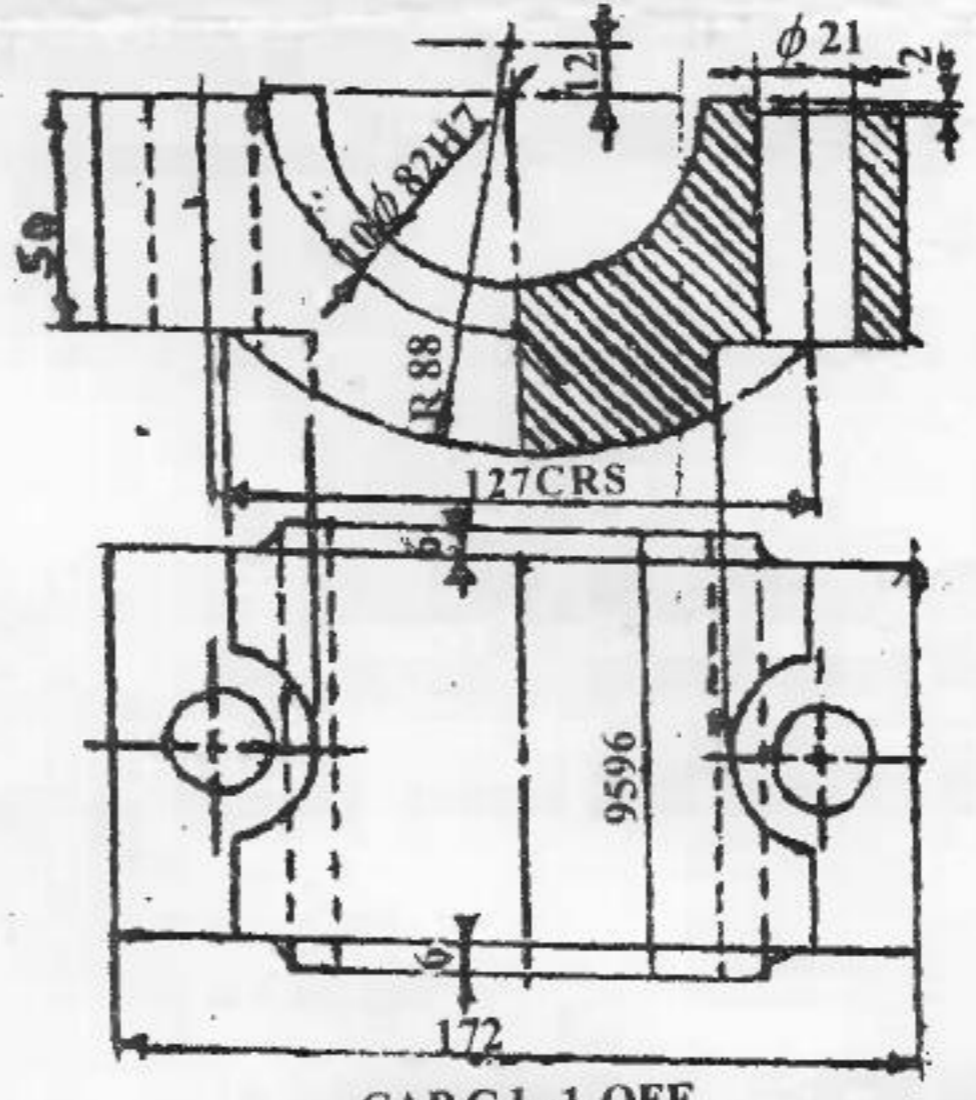
BE - II/6(A) - 2142GS



BODY C.L., 1-OFF



BRASSES G.M. 2-OFF



CAP C.L., 1-OFF

